

JARVIS CUTTING TOOLS

PIPE TAPS

FOR PLUMBING SUPPLY RETAILERS



PRICING

Jarvis Brand

SIZE	JARVIS PART ID	PRICE PER UNIT
1/8-27	G127036J-1	\$8.36
1/4-18	G127206J-1	\$8.84
3/8-18	G127360J-1	\$11.81
1/2-14	R137530J-1	\$16.41
3/4-14	R127700J-1	\$23.64
1-11 1/2	R127784J-1	\$36.02
1 1/4 - 11 1/2	R127875J-1	\$42.19
1 1/2 - 11 1/2	R127930J-1	\$63.32
2 - 11 1/2	R127991J-1	\$109.59

Private Label

SIZE	JARVIS PART ID	PRICE PER UNIT
1/8-27	G127036J-S	\$10.36
1/4-18	G127206J-S	\$10.84
3/8-18	G127360J-S	\$13.81
1/2-14	R137530J-S	\$18.41
3/4-14	R127700J-S	\$26.14
1-11 1/2	R127784J-S	\$38.52
1 1/4 - 11 1/2	R127875J-S	\$44.69
1 1/2 - 11 1/2	R127930J-S	\$65.82
2 - 11 1/2	R127991J-S	\$112.09

CUSTOMER SHIPMENTS



**SCHEDULED
SHIPMENTS**



**HOLD FOR
RELEASE**



**CUSTOM
STOCKING
PROGRAM**



**MADE TO
ORDER**



**STANDARDS
OFF THE
SHELF**

SUPPLY OPTIONS

Jarvis Brand

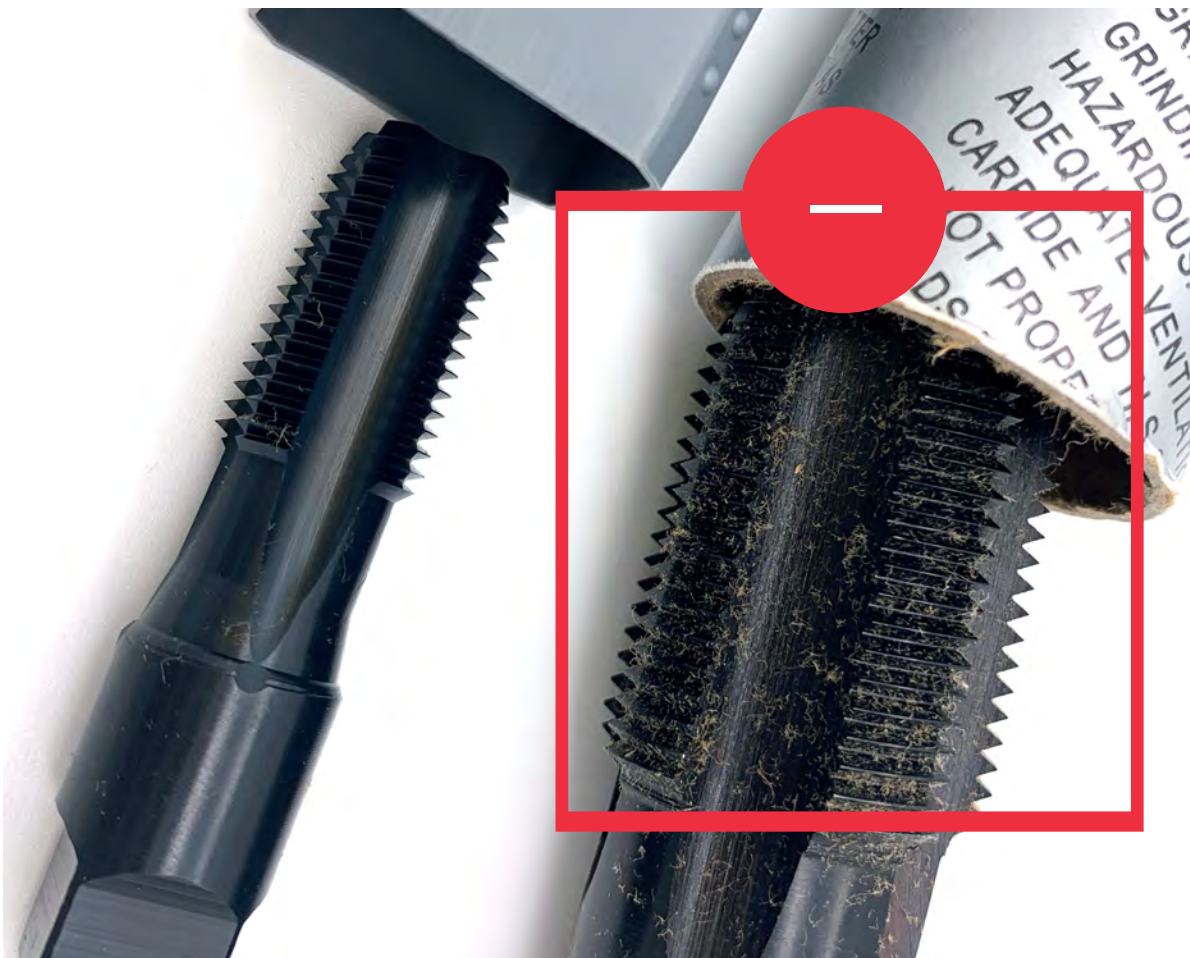
- No contracts
- \$500 minimum purchase
- Off-the-shelf availability
- Can drop ship directly to any location
- Freight is collect using your UPS account number

Private Label

- No contracts
- \$3,000 minimum purchase
- 5-Week Lead Time
- Can drop ship directly to any location
- Freight is collect using your UPS account number



SUPERIOR DURABILITY

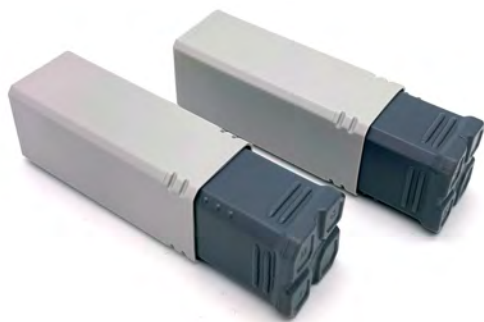




PREMIUM PACKAGING

Our sleek and modern packaging is both aesthetic and practical

- Durable plastic
- Stackable rectangle
- Lays flat on shelves



Cardboard Tubes

- Breaks down easily
- Water-sensitive
- Rolls on shelves

BETTER PRESENTATION



IMPROVED POS ORGANIZATION



- ROLL AROUND EASILY
- ROUND TUBES MAKE SHELVES MESSY
- CARDBOARD INTERIOR BREAKS DOWN MAKING TOOLS LOOK DIRTY



- STACKABLE DESIGN
- EASIER AND QUICKER INVENTORY COUNTING
- NO SHEDDING & CLEAN LOOKING TOOLS



MARKETING



CUSTOMIZABLE CO-BRANDING

In addition to custom label options- We'll also promote the availability of Jarvis tools at **YOUR STORE** on our social platforms and website.

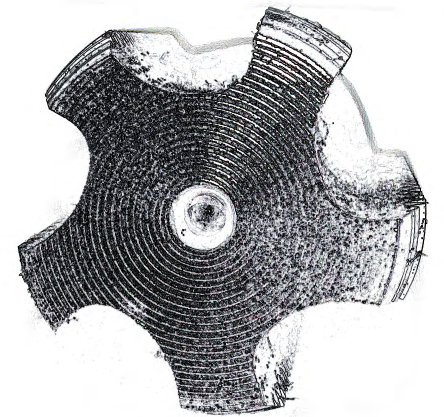
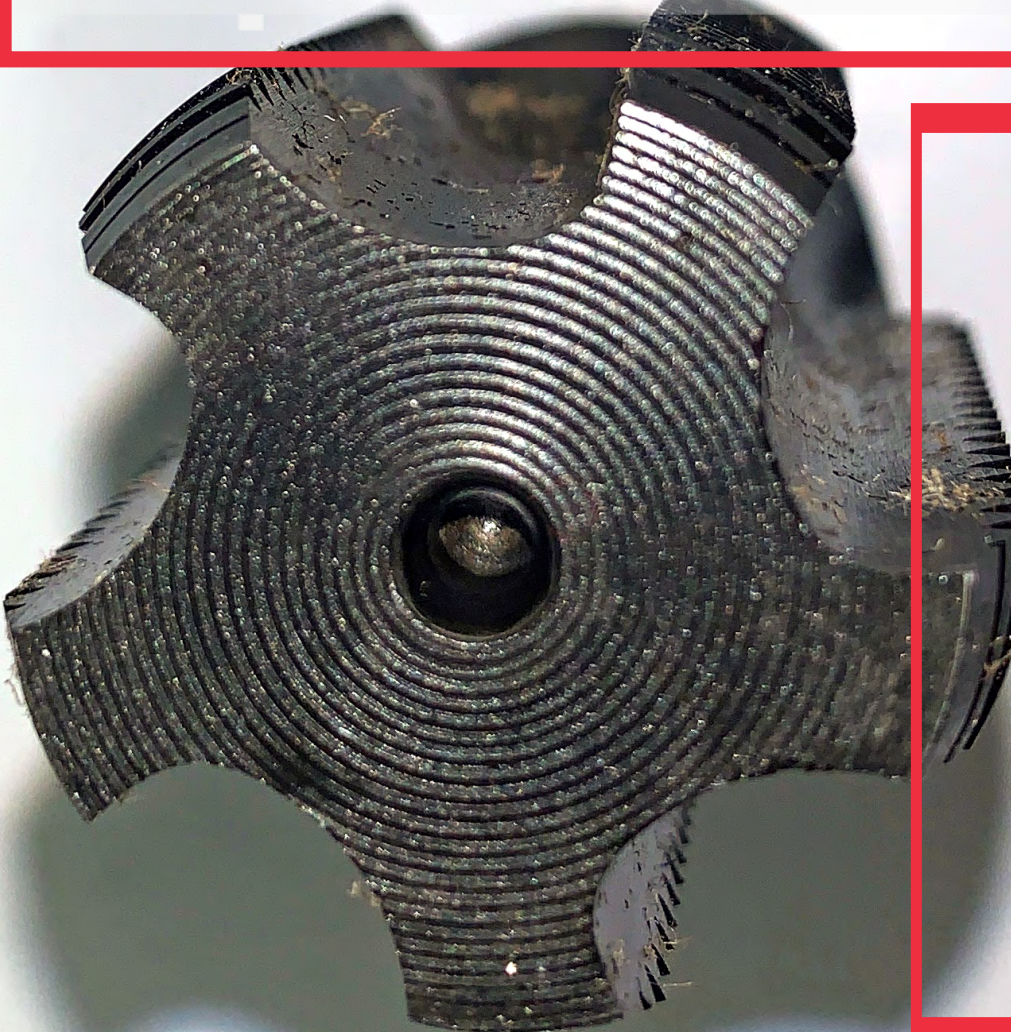
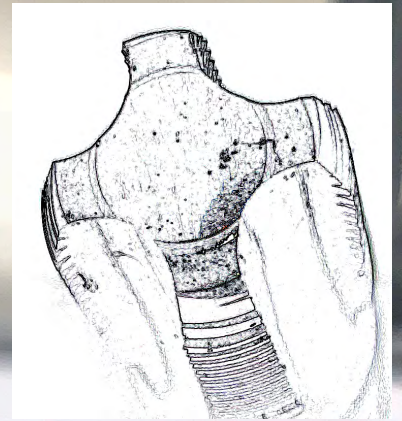


PRIVATE LABEL BRANDING

GEOMETRY

JARVIS IMPROVED FLUTE GEOMETRY FOR GENERAL USE

- STRONGER CUTTING EDGE
- BETTER GEOMETRY FOR CHASING, OR “CLEANING” EXISTING THREADS
- OPTIMIZED GEOMETRY FOR A VARIETY OF MATERIALS (BRASS, COPPER, CAST IRON)



RIGID FLUTE GEOMETRY

- HIGH ANGLE OF ATTACK RESULTS IN WEAKER CUTTING EDGE
- GEOMETRY RESULTS IN TAP GRABBING, OR CATCHING, MATERIAL INSTEAD OF CUTTING MATERIAL
- GEOMETRY ONLY FOR SOFT MATERIALS



IF YOUR INTERESTED IN PLACING AN ORDER OR LEARNING MORE PLEASE CONTACT US.

JARVIS CUTTING TOOLS

100 Jarvis Ave. Rochester, NH 03868 | Tel: 603.332.9000 | jarviscuttingtools.com